

3QUEEN
SQUARE
LONDON WC1N 3AR



PRIOR TO FIT OUT



AVAILABLE
2,750 sq ft

STUNNING OFFICE FLOOR
WITH PRIVATE TERRACE

Location

The property is on the west side of this garden square. Communications are excellent with Holborn (Central Line) and Russell Square (Piccadilly Line) Underground Stations a short walking distance away Euston, King's Cross/St. Pancras stations are easily accessible. The area is well served by hotels, restaurants, cafés and shopping.

Description

The offices are offered “as fitted” or in open plan. The property has been refurbished to provide high quality space directly overlooking Queen Square, a hidden oasis in the centre of Bloomsbury.

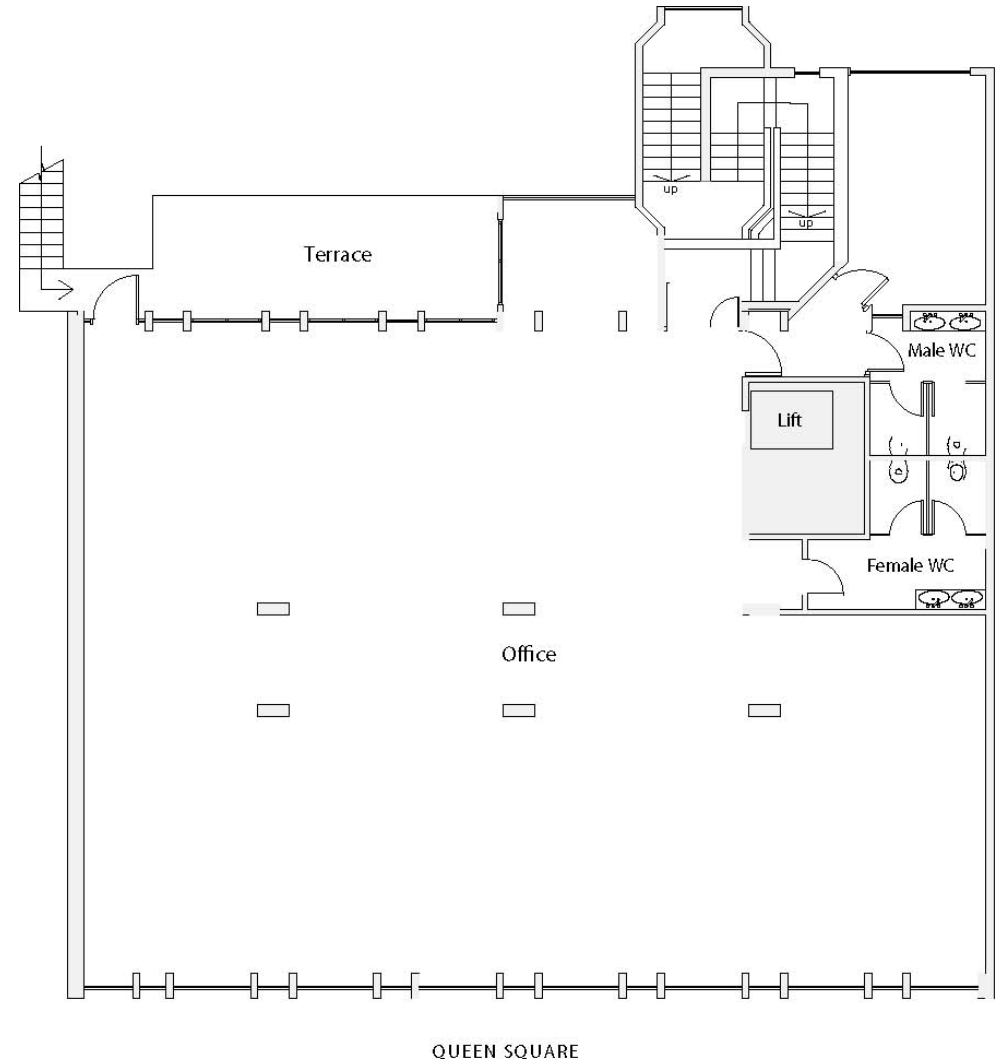
Accommodation

The available accommodation is on the first floor, having a net floor area of 2,750 sq ft. The offices have a generous ceiling height and benefit from outstanding natural daylight. There is an outstanding terrace with direct access from the office floor.



Specification

- VRF air conditioning
- 8 person passenger lift
- High quality reception area, with circle slide access door and European Jura limestone to the floor and walls.
- Solid European oak flooring
- Underfloor trunking
- Floor to ceiling double glazing, with opening windows
- Plaster coated ceilings with high frequency fluorescent uplighting
- Male and female WC's finished to a high standard with Jura marble flooring and 'Duravit' basin.
- Covered terrace with feature lighting and solid timber plank flooring



Lease

A new lease is available direct from the owner, for a term to be agreed.

Terms

RENT	RATES	S/C	TOTAL PA
£52.50 PSF	£17.00 PSF	c.£10.00 PSF	£79.50 PSF

Viewing

Strictly by appointment through sole agents.

Contact

Peter Hutchinson

020 7297 9665

07712 779619

p.hutchinson@hmc.london



www.hmc.london

HMC 3 Duke of York Street London SW1Y 6JP T: 020 7439 1500 E: mail@hmc.london

Whilst every effort has been made to ensure the accuracy of these particulars, they are for guidance only and do not form part of any contract. Unless otherwise stated, all prices and rents quoted are exclusive of VAT.